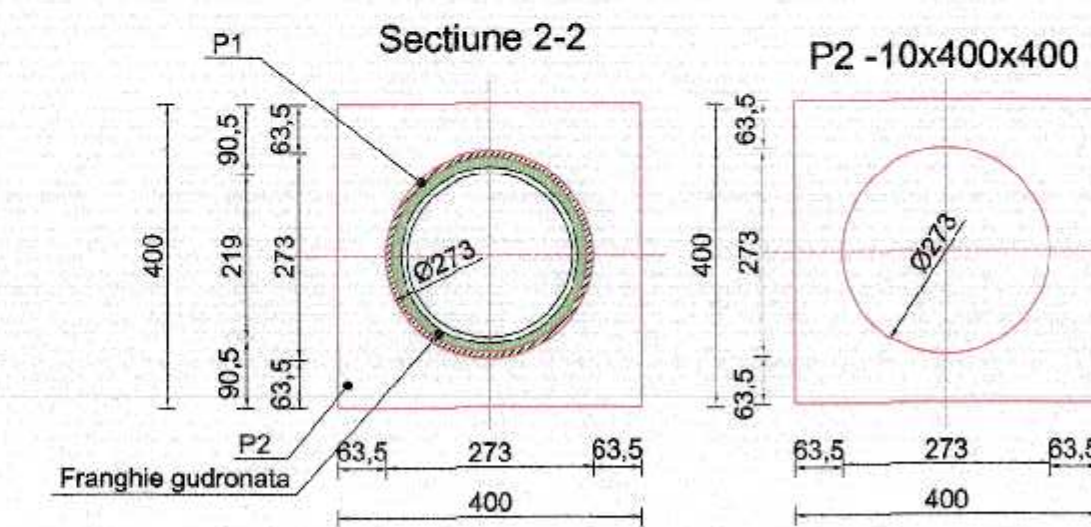
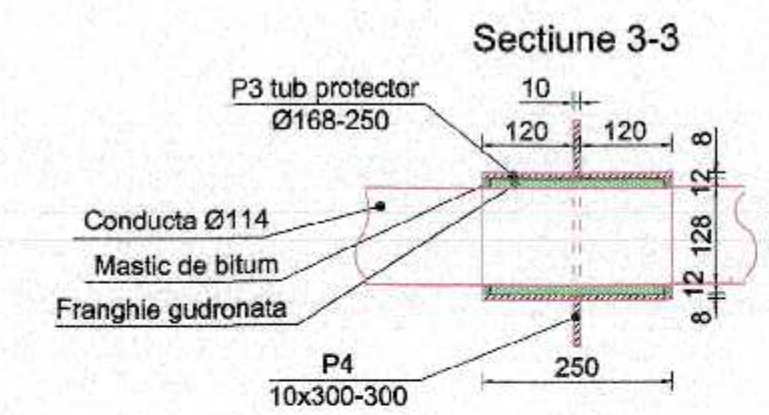
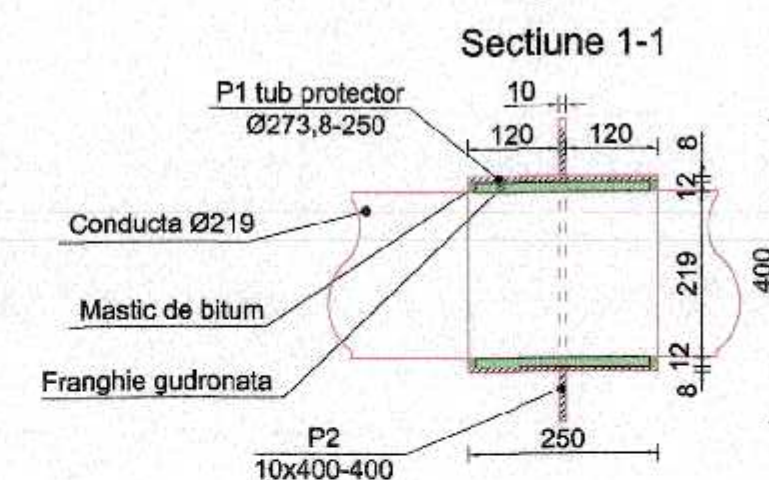
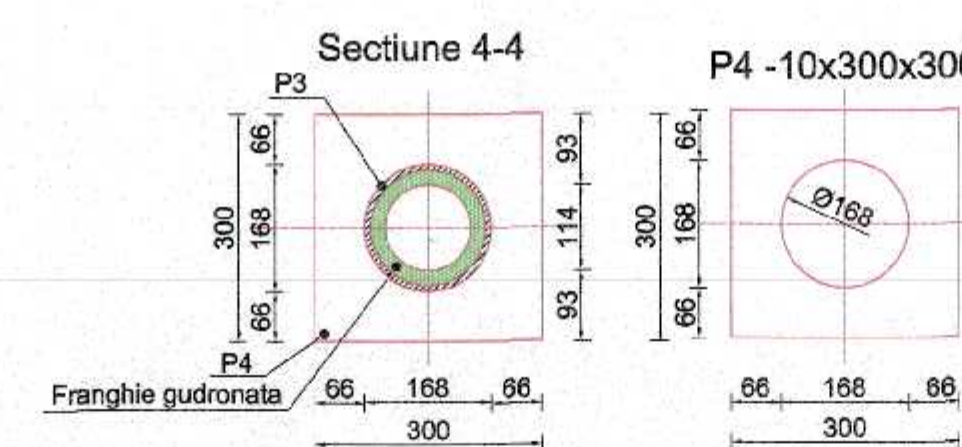
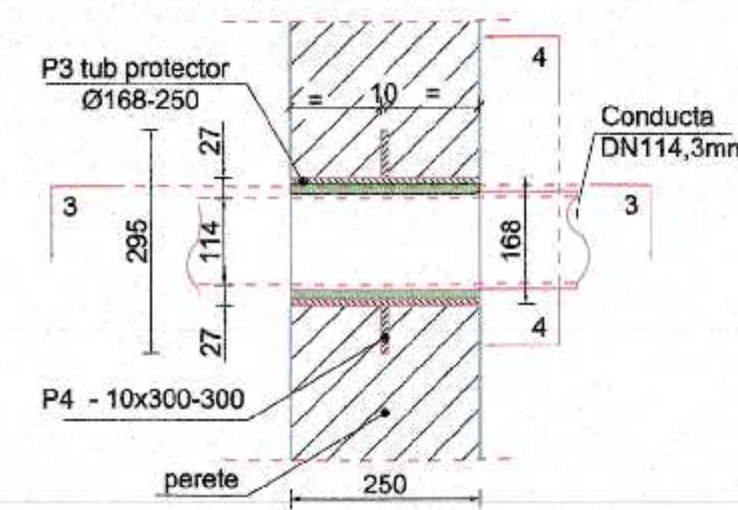
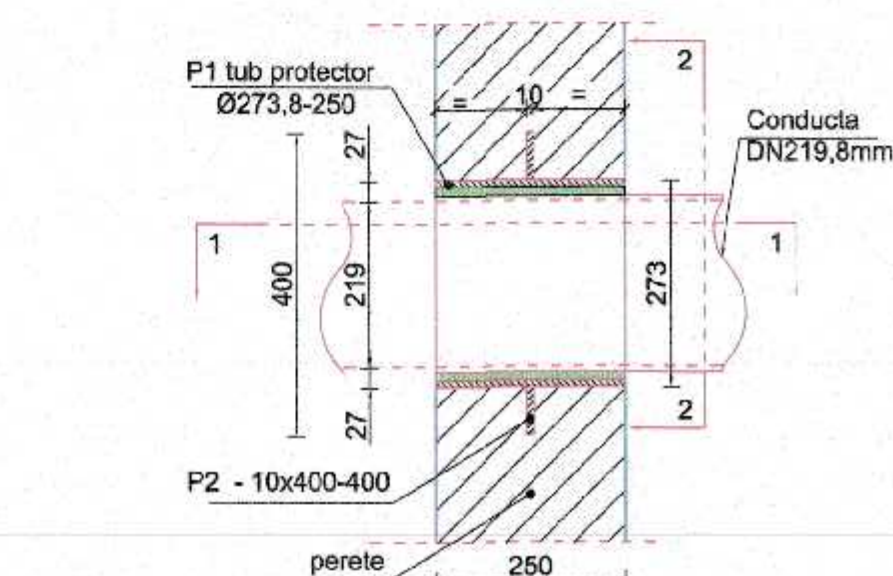


NOTES :

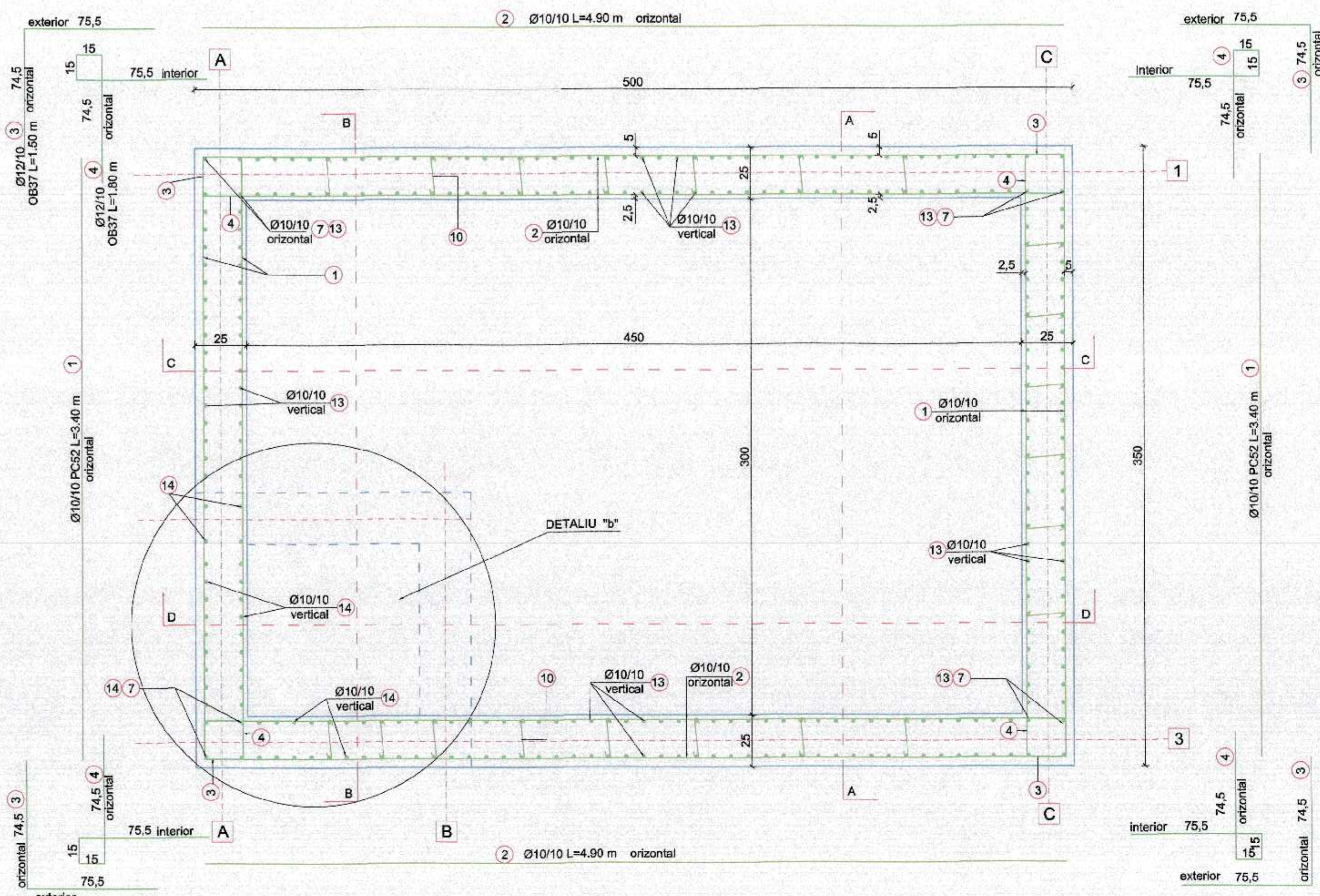
- CATEGORIA DE IMPORTANTA "C" conf. HG 766/1997
- CLASA DE IMPORTANTA "III" conform P100-1/2013;
- CONSTRUCTIA ESTE AMPLASATA IN ZONA SEISMICA CU ACCELERATIA TERENULUI PENTRU PROIECTARE $a_g = 0.35g$ SI PERIOADA DE CONTROL (DE COLT) $T_0 = 0.7$ s - conform P100 - 1/2013;
- DOMENIUL DE VERIFICARE A1;
- DIAMETRE ARMATURII IN MM;
- DIMENSIUNI / COTE DESEN IN CM;



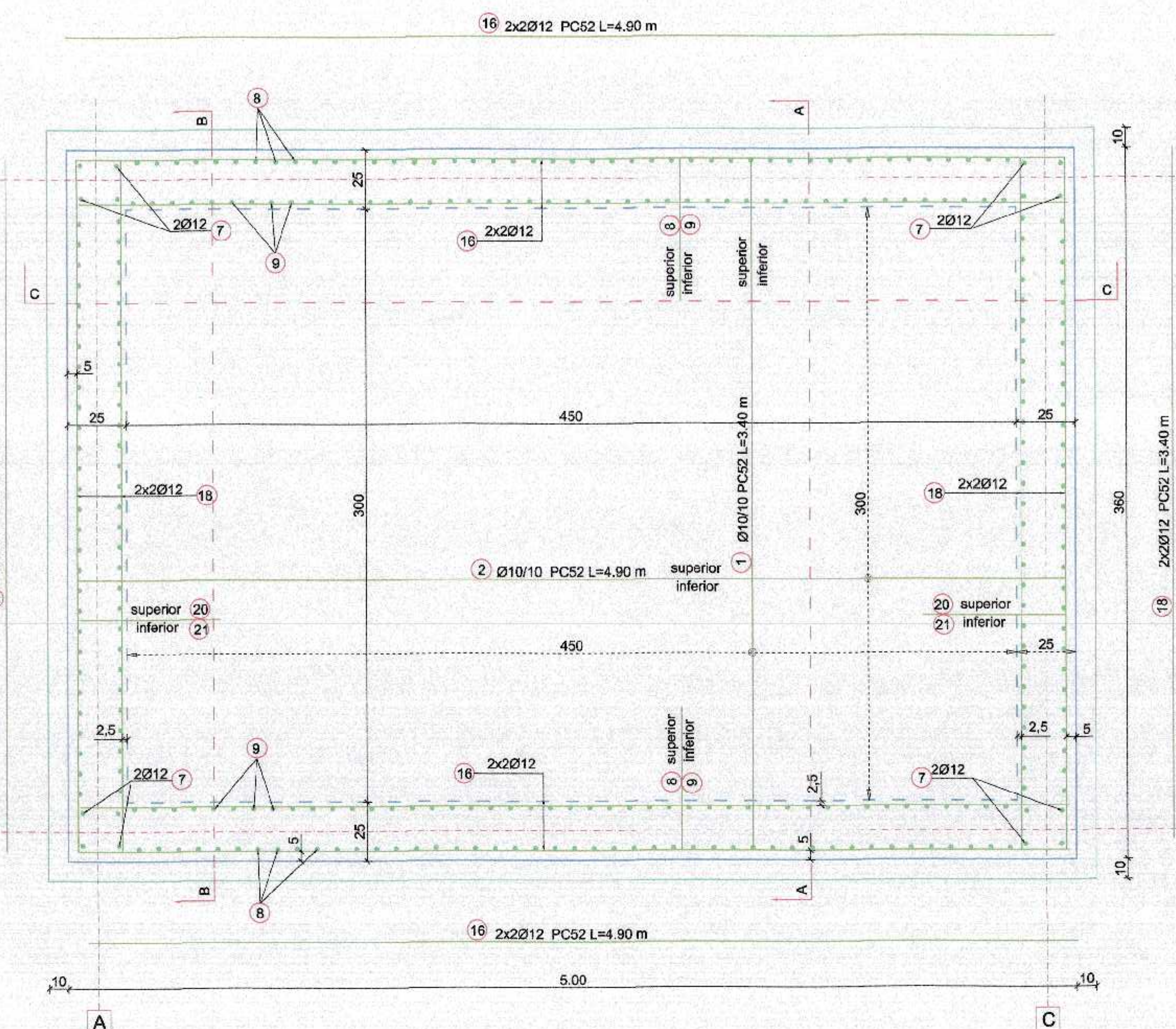
Extras de materiale								
Pos. Poz.	Name Nume	Material	Product norm Norma Produs	Pcs. Buc.	Dimensions (mm)	Weight / Greutate		
						kg/pcs	kg/m	Total
P1	Teava Ø273*8	S235 JR	SR EN 10219-2-2006	1	250	-	52.28	13.07
P2	Plate	S235 J2	SR EN 10029-2011	1	10 400 400	12.58	-	12.58
P3	Teava Ø168*8	S235 JR	SR EN 10219-2-2006	1	250	-	32.00	8.00
P4	Plate	S235 J2	SR EN 10029-2011	1	10 300 300	7.07	-	7.07
Total (kg) - including 3%								42

[illegible]

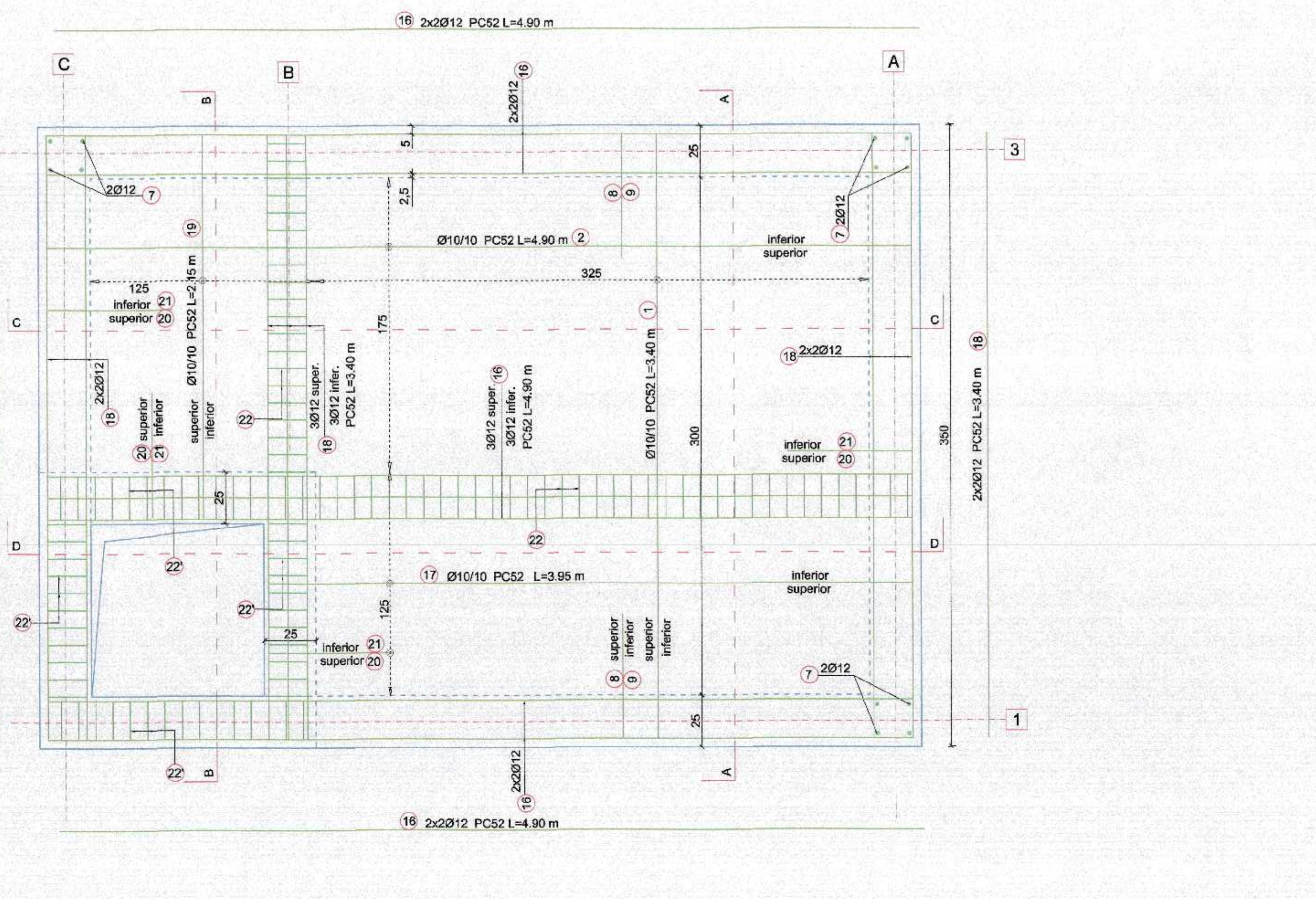
CAMIN PSI Sara 1:20 - armare -



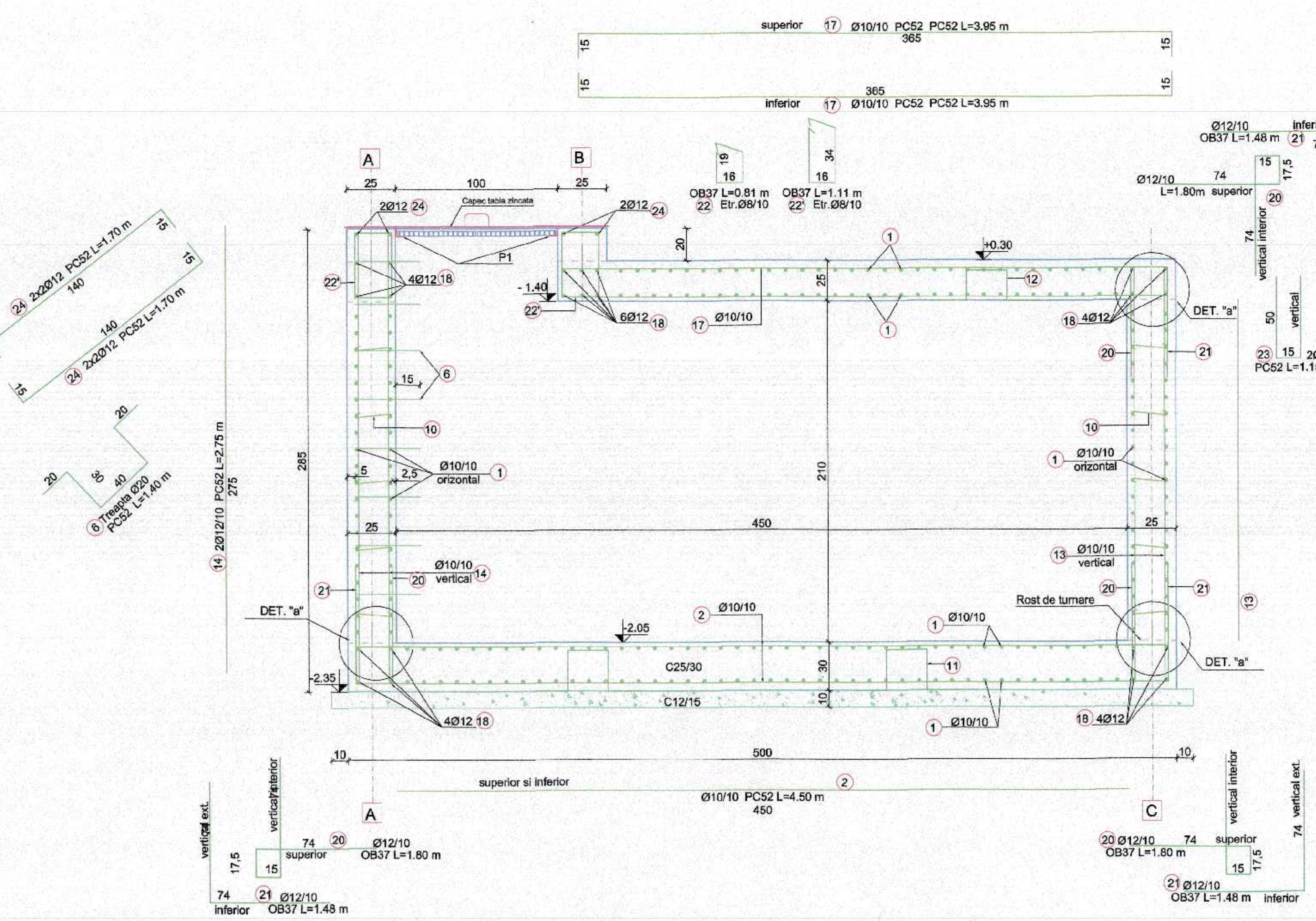
ARMARE PLACA - COTA -2.05 Sara 1:20



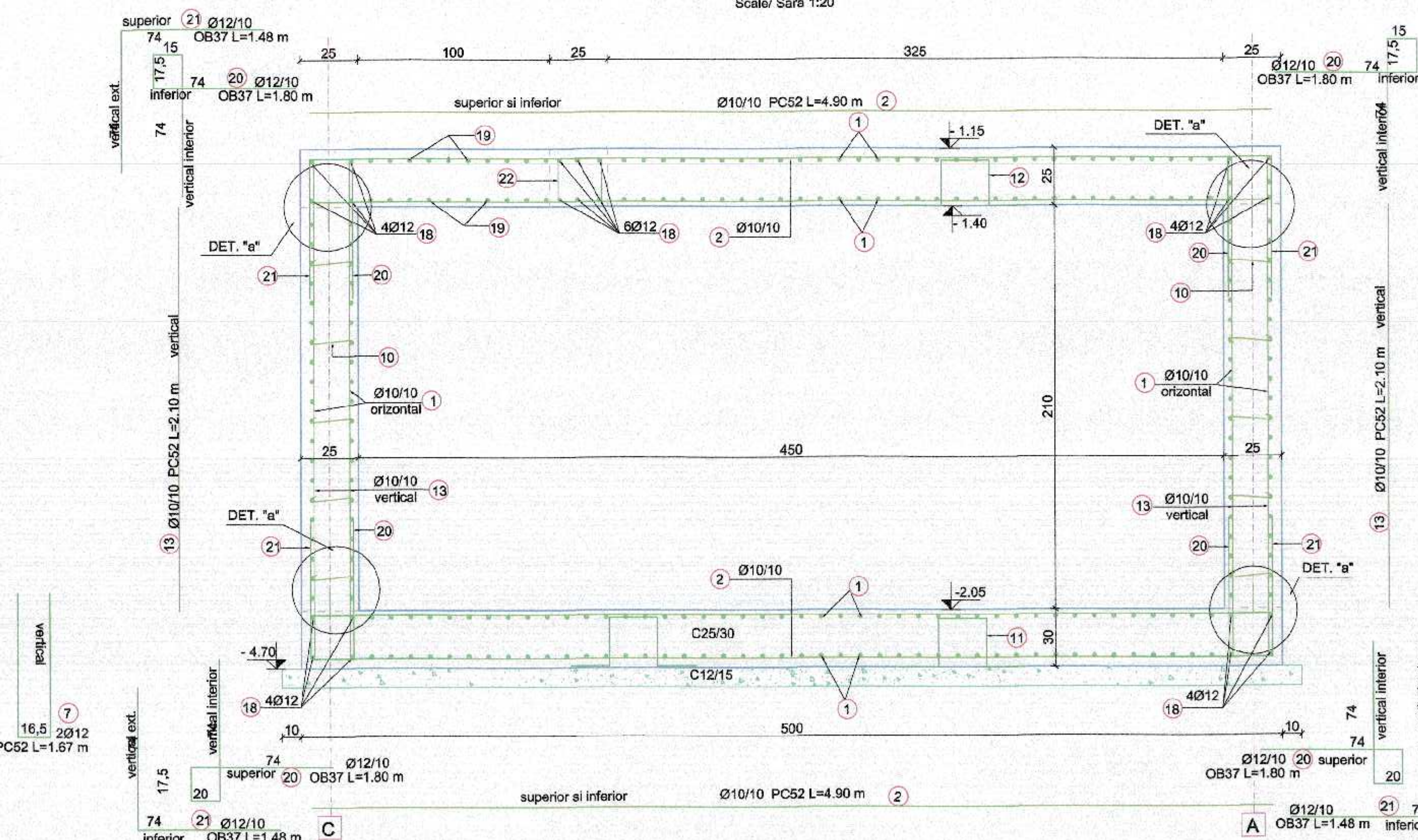
ARMARE PLACA - COTA +0.30 Sara 1:20



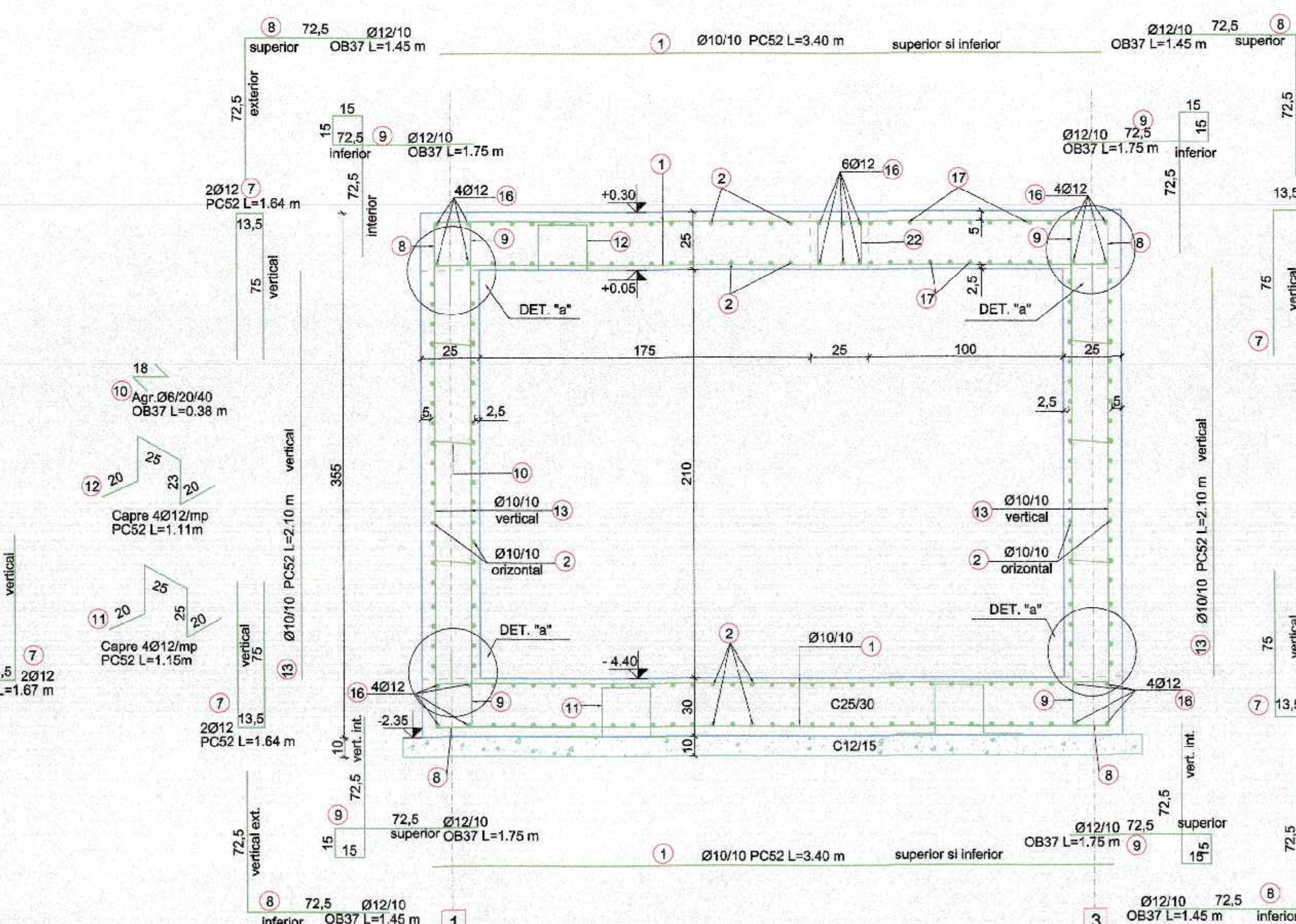
SECTIUNE D-D Sara 1:20



SECTION / SECTIUNE C-C Sara 1:20



SECTIUNE A-A



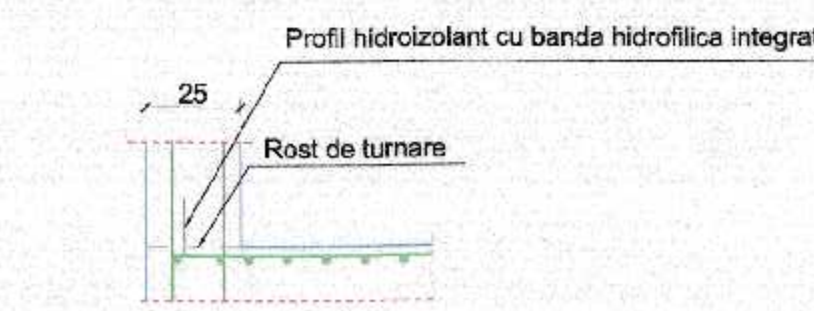
STEEL WORKS SCHEDULE									
Pos.	Name	Technical norm/STAS	Material	Pieces	Dim. (mm)	Weight (kg)	Total kg/pos		
P1	L50X50x5	SR EN 10056-1:2006	S235 J2	4	1000	3.77	15.08		
P2	Lug 96	SR 438-1:2002	PC52	20	200	0.10	2.00		
P3	Grate SP 40x2	SR EN ISO 1461	S235 J2	2	975x475	16.20	32.40		
P4	Galv. Sheet 1 mm	SR EN 10056-1:2006	/	1	1x1540x1540	37.22	37.22		
P5	Galv. Handle Ø10	SR 438-1:2002	/	2	350	0.14	0.28		
Total (kg)						87.0			

EXTRAS ARMATURA									
Total Length / Lung Totala									
Mark	Size	Length (m)	PC52	Ø6	Ø8	Ø10	Ø12	Ø20	
1	10	3.40	240						
2	10	4.90	180						
3	12	1.50	80						
4	12	1.80	80						
5	20	1.40	8						11.20
6	12	1.04	16						26.24
7	12	1.45	160						
8	12	1.45	160						261.00
9	12	1.75	180						315.00
10	6	0.38	514						195.32
11	12	1.15	64						816.00
12	12	1.11	45						62.1
13	10	2.10	282						46.95
14	10	2.75	52						550.2
15	12	4.90	22						143
16	12	3.95	20						107.80
17	10	3.95	20						79.00
18	12	3.40	22						43.09
19	10	2.15	20						180.00
20	12	1.80	100						148
21	12	1.48	100						46.80
22	8	0.81	60						57.72
23	12	1.15	2						2.30
24	12	1.40	8						11.20
Length / Lung. Ø (m)				195.32	105.32	1168	2513.20	334.39	11
Mass / Greut. / Ø (kg)				0.222	0.365	0.888	0.617	0.988	2.405
Total Mass per bar				43	42	1037	1551	297	28
Total Mass per bar				1123				1875	
Total Mass per bar									2698

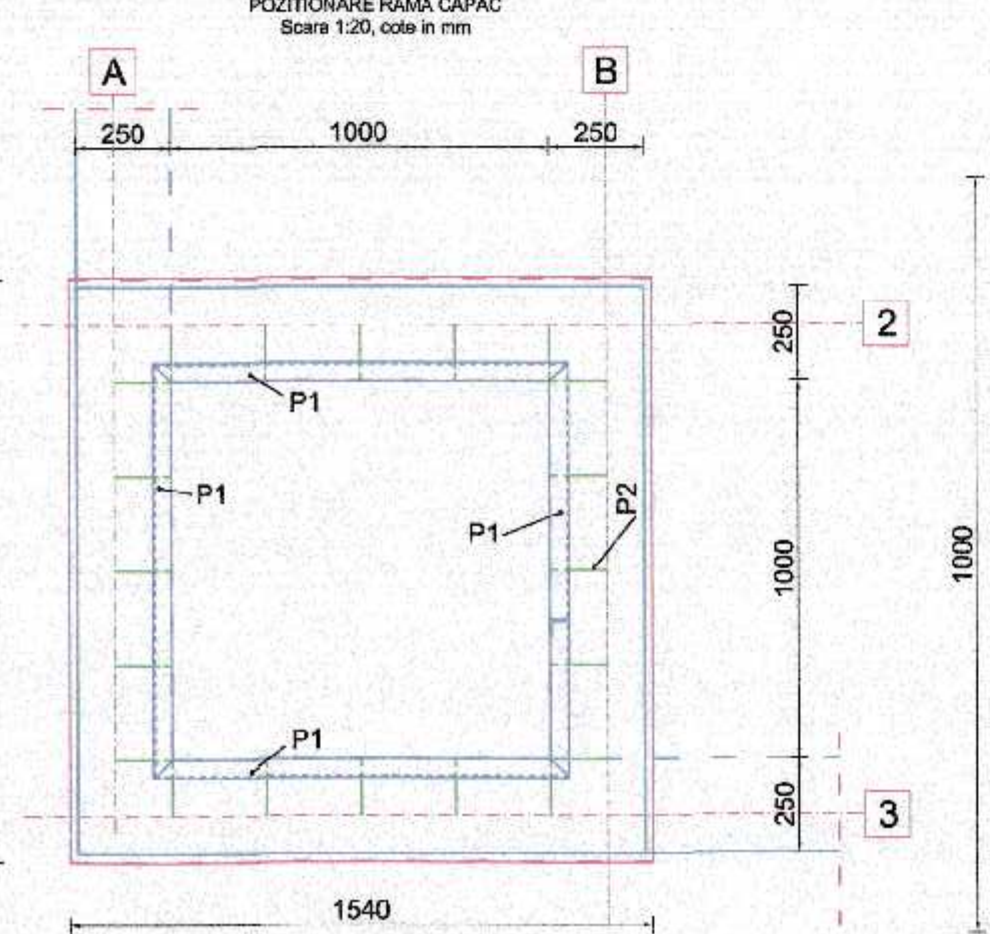
- MATERIALE:**
- BETON ARMAT
 - C25/30 - XC4+XF1 Cl C20; CEM II A-S 32.5 N sau R; S3
 - CLASA DE IMPORTANTA "I" conform P100-12013
 - BETON SIMPLU
 - C12/15 - XC1 Cl 10; CEM II A-S 32.5 N sau R; S1-S3
 - CLASA DE IMPORTANTA "I" conform P100-12013
 - ARMATURA:
 - ØB37; PC52 - SR 438-1:2012;
 - STNB - SR 438-3:2012;

- NOTES:**
- CATEGORIA DE IMPORTANTA "C" conform HG 780/1997
 - CLASA DE IMPORTANTA "I" conform P100-12013
 - CONSTRUCTIA ESTE AMPLASATA IN ZONA SEISMICA CU ACCELERATIA TIERINULUI PENTRU PROIECTARE ag = 0.35g SI PERIOADA DE CONTROL (DE COLT) Tc = 0.7 s - conform P100 - 12013.
 - DOMENIUL DE VERIFICARE A1;
 - DIAMETRE ARMATURII - IN MM
 - DIMENSIUNI / COTE DESEN - IN CM

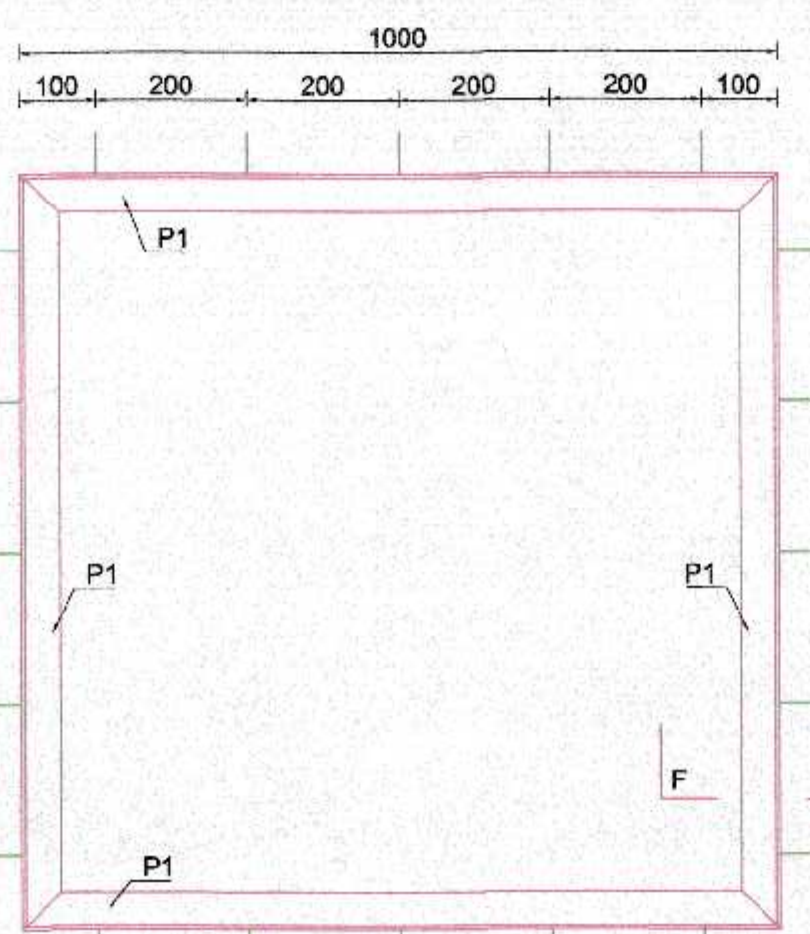
DETALIUL / DETAIL "a" sc. 1:20



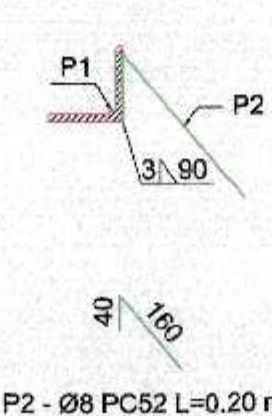
DETALIUL "b" sc. 1:20



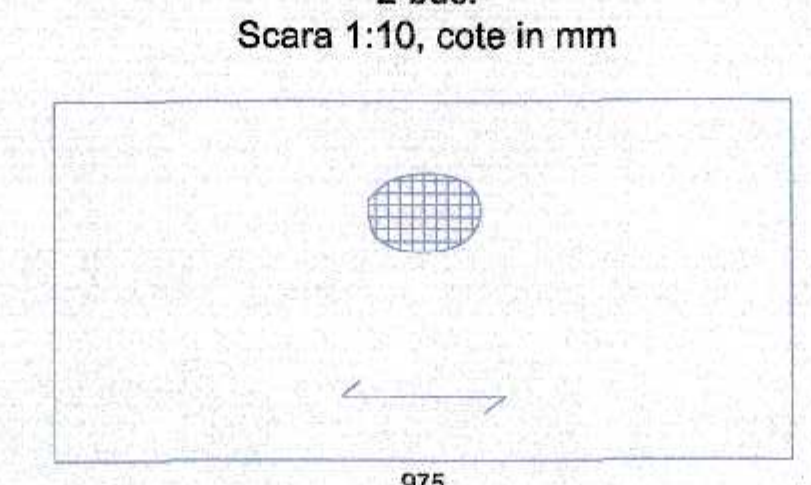
Comier inglobat in beton - vedere in plan Sara 1:10, cote in mm



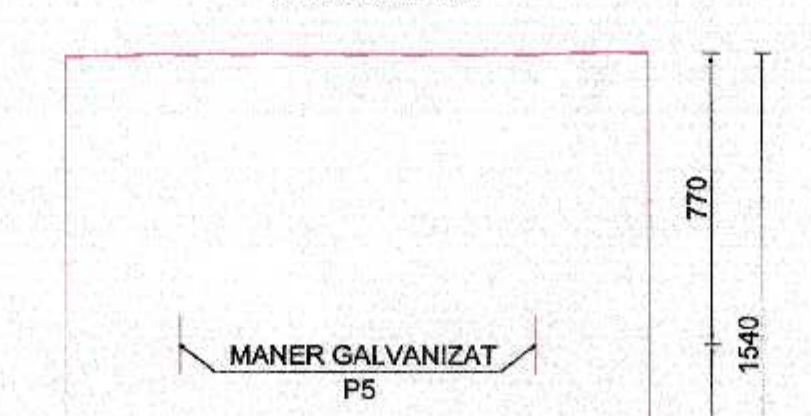
Sectiune F-F Sara 1:5, cote in mm



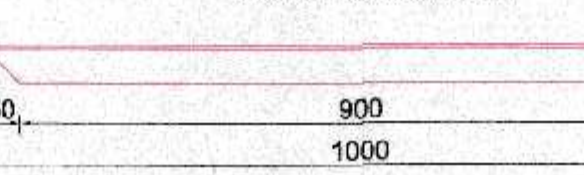
P3 - GRATAR ZINCAT 2 buc. Sara 1:10, cote in mm



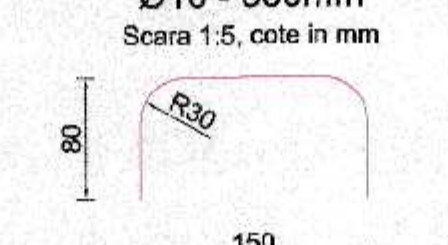
P4 - CAPAC TABLA ZINCAT Sara 1:20, cote in mm



P1 - L50X50X5-1000mm Sara 1:10, cote in mm



P5 - MANER GALVANIZAT Ø10 - 350mm Sara 1:5, cote in mm



64	63	62	61	60	59	58	57	56	55	54	53	52	51	50	49	48	47	46	45	44	43	42	41	40	39	38	37	36	35	34	33	32	31	30	29	28	27	26	25	24	23	22	21	20	19	18	17	16	15	14	13	12	11	10	9	8	7	6	5	4	3	2	1	0																																																																																															
REVIZUIRE PROIECT																																REVISOR																																PROIECTANT																																VERIFICATOR																																APROBATOR																															
DATA																																DISCIPLINA																																SPECIALITATE																																FAZA																																REVIZOR																															
DESEMNEARE																																DESEMNEARE																																DESEMNEARE																																DESEMNEARE																																DESEMNEARE																															
SCARA																																SCARA																																SCARA																																SCARA																																SCARA																															
PLAN DE DETALII																																PLAN DE DETALII																																PLAN DE DETALII																																PLAN DE DETALII																																PLAN DE DETALII																															